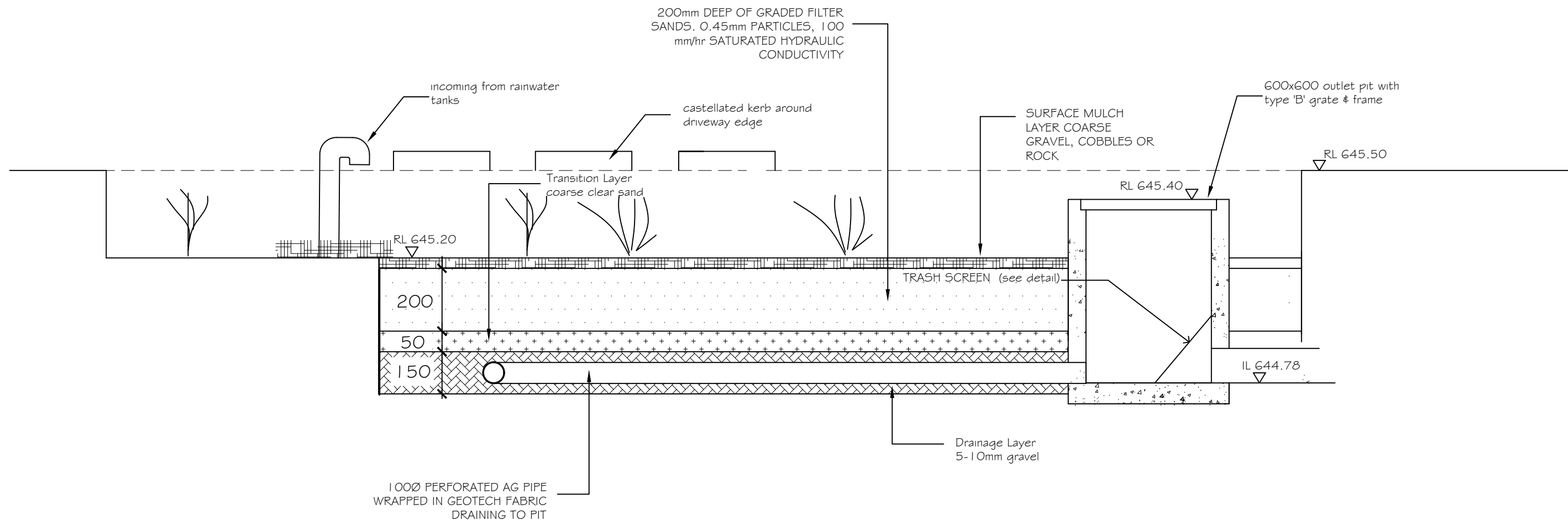


SECTION A-A THROUGH  
BIO RETENTION / DETENTION BASIN  
Not to Scale



SECTION B-B THROUGH  
BIO RETENTION / DETENTION BASIN  
Not to Scale

Note:  
The site storage requirement is calculated to be 55 cu/m.

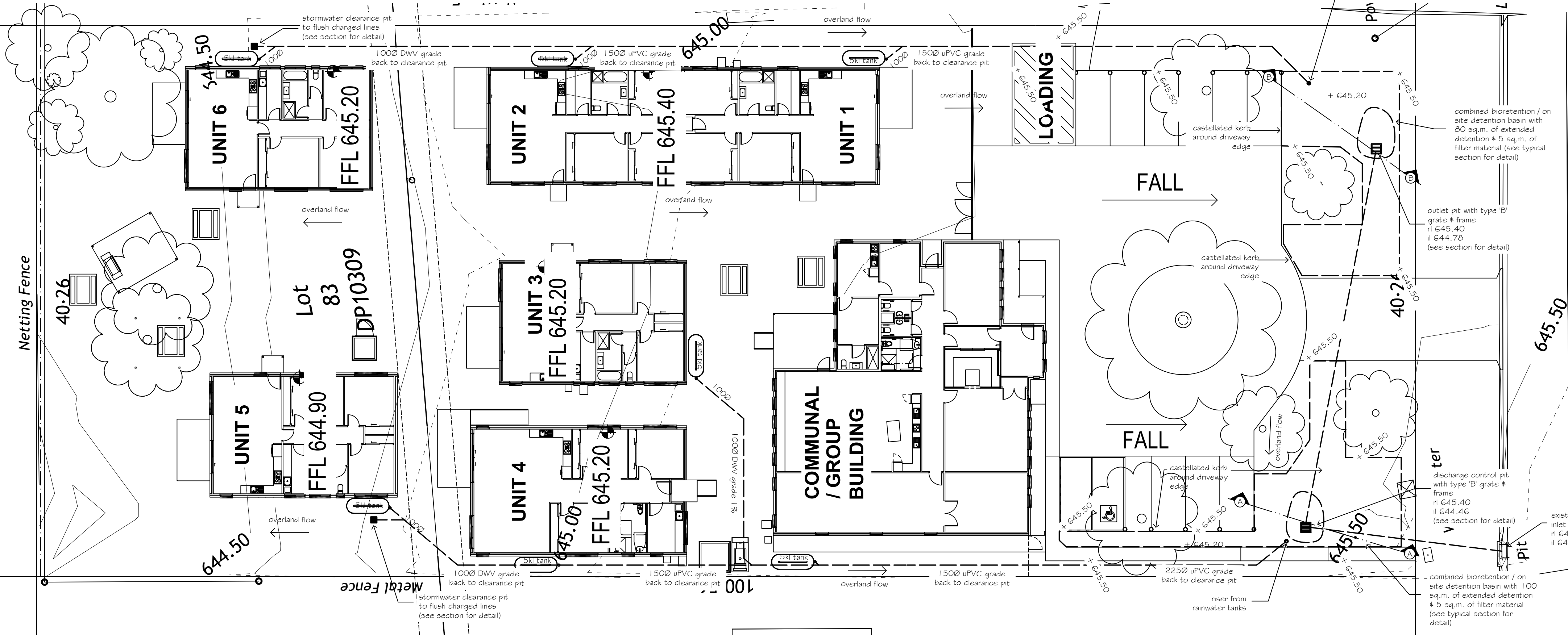
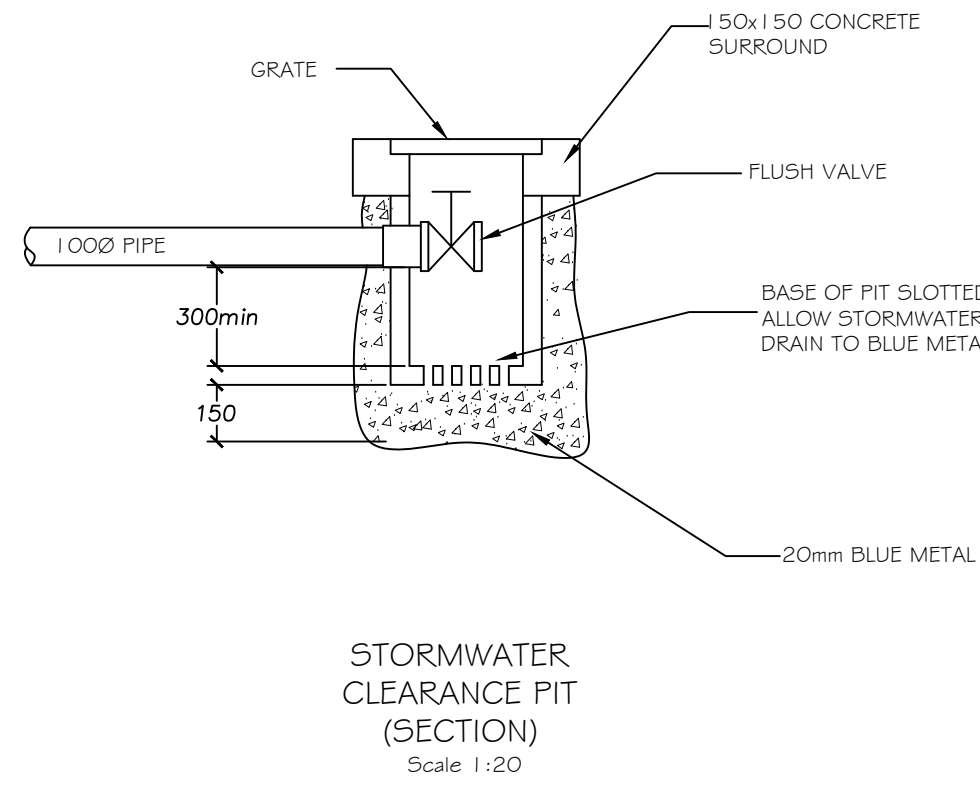
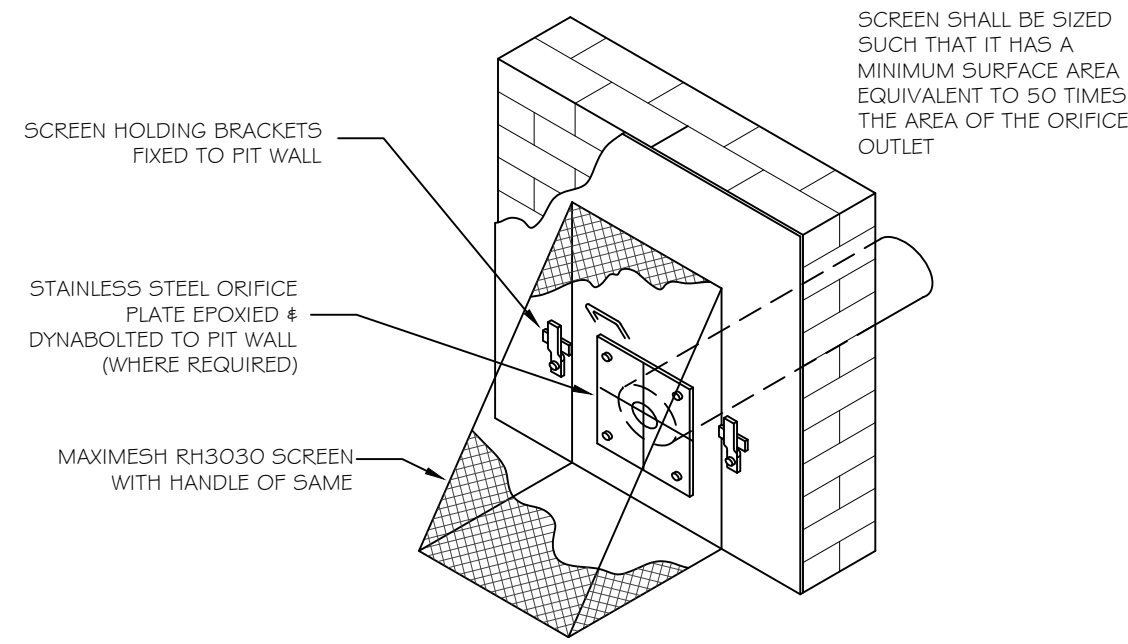
7 x 5,000 litre rainwater tank will be installed

17.5 cu/m of detention allowance for the tanks. The bio-retention basins provide a further 54 cu/m of detention

Permissible site discharge equal to the pre development run off for 1% AEP worst case storm is calculated to be 73 l/s

As designed the total discharge post development from the site during a 1% AEP worst case storm is 46 l/s

The 'Drains' programme by Watercom has been used to model this system, flow rates shown are for: worst case 20% AEP storm



REFER TO ARCHITECTS DRAWINGS,  
STRUCTURAL ENGINEERS DRAWINGS &  
OTHER HYDRAULIC DRAWINGS FOR DETAILS

GENERAL NOTE  
ALL PLUMBING & DRAINAGE SHALL BE UNDERTAKEN IN STRICT ACCORDANCE WITH  
a) AS 3500 NATIONAL PLUMBING & DRAINAGE CODE  
b) NATIONAL CONSTRUCTION CODE  
c) LOCAL GOVERNMENT AUTHORITY  
d) RELEVANT AUSTRALIAN STANDARDS  
e) NATURAL GAS INSTALLATION SHALL BE IN ACCORDANCE WITH AS 5601-2013  
f) IN ACCORDANCE WITH THE REQUIREMENTS OF WATER NSW

ALL DRAWINGS ARE DIAGRAMMATIC ONLY

DOUBLE SKULL PTY LTD 7 REX ST GOULBURN	Site Hydraulics * Stormwater Management Plan	Adams & Associates – Hydraulics hydraulic services consultants	DRIVING PLATE PO Box 2094 Maitland NSW 2320 Ph 0414 873 354	ACN 101 185 531 ABN 49 101 185 531 email: rob@adams-hydraulics.com.au	DATE 18-4-2025	PROJECT NUMBER	ISSUE A
DOUBLE SKULL PTY LTD 7 REX ST GOULBURN	Site Hydraulics * Stormwater Management Plan	Adams & Associates – Hydraulics hydraulic services consultants	DRIVING PLATE PO Box 2094 Maitland NSW 2320 Ph 0414 873 354	ACN 101 185 531 ABN 49 101 185 531 email: rob@adams-hydraulics.com.au	DATE 18-4-2025	PROJECT NUMBER	ISSUE A